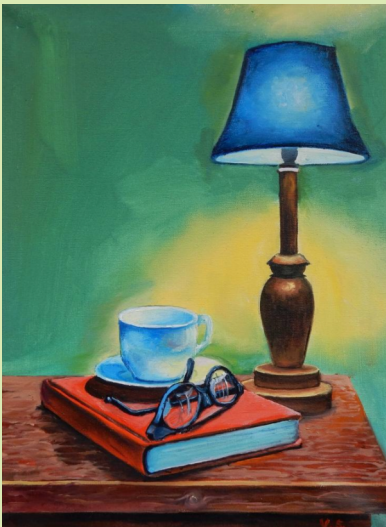


Still Lives

A Culture Collective Project for Shetland Arts

How are unpaid carers affected by the pandemic? 90% spend more time caring, 82% can't access respite/breaks, 86% say their workload has increased, 74% say their needs have become more complex.

Carers Trust



Still Life: books and lamp, Vita Schagen

Take some time for yourself. Meet other carers in an informal and friendly atmosphere. We are offering;

Two fully funded art workshops for unpaid carers. Come to one or both. Use painting and/or collage as a way to reflect on your time as an unpaid carer through the pandemic. Refreshments provided, chat encouraged!

Bring 4 or 5 objects that represent your life as a carer. Use these as a basis for a still life artwork.

No experience needed, materials and lots of help supplied. Covid safe practices employed.



I Still life by Lse hviid

Two four hour workshops take place at Speldiburn (former school), Bressay in late February. Times to be arranged to work with carers' needs, but will work with the ferry. Fares from Lerwick are covered and transport between the ferry and Speldiburn provided. Let us know if you are interested and what times suit you.

Contact Shetland Carers on 01595743980 or carers@shetland.org or Heather Christie on 07455 946756 or email heather@heatherchristie.co.uk

Culture Collective is a national programme supported by Creative Scotland exploring ways of working together, supporting artists and embedding the arts within community recovery from the effects of Covid-19. Shetland, Orkney and the Outer Hebrides are working together as an 'island group' to share their experience and contribute to their communities.

Creative Scotland is the public body that supports the arts, screen and creative industries across all parts of Scotland on behalf of everyone who lives, works or visits here. We enable people and organisations to work in and experience the arts, screen and creative industries in Scotland by helping others to develop great ideas and bring them to life. We distribute funding provided by the Scottish Government and the National Lottery. www.creativescotland.com



Shetlandarts



An Lanntair



ALBA | CHRUTHACHAIL